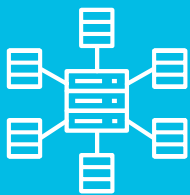
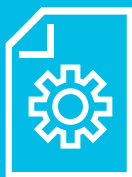


# PowerSeries Pro 1.1 Commercial Security System

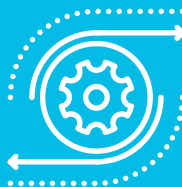
Hardwired Expansion Modules



Integration  
Capabilities



Easy  
Installation



Flexibility



Growth  
Opportunities

# A POWERFUL NEW SYSTEM FOR BUSINESSES OF ALL SIZES

Introducing PowerSeries Pro 1.1, the commercial-grade security system helps you cut the ties that bind you – literally. A system more convenient, more efficient and more powerful than ever before.

Hardwired expansion modules provide flexibility to effectively address current or future security needs by increasing the number of hardwired zones available on the system and providing additional programmable outputs and/or power.

## True Freedom

PowerSeries Pro wireless flexibility. No more drilling into walls and no more wires to run. Setup is quick and easy.

## Best In Class Security

PowerG wireless devices run on two-way 128-bit AES encryption making them highly secure against powerful analysis tools and digital attacks.

## As Powerful As Ever

The system is built with robust and reliable long range communications in mind, with four times the range of traditional wireless systems – up to 2 kilometres/6000 feet. The longer range means fewer repeaters which translates to cost savings for your enterprise.

## An Optimized System

PowerG devices use Adaptive Transmission Power (ATP) which dynamically adapts transmission strength to any

changes in the physical environment and automatically optimizes its route to the control panel, extending battery life for up to 6 years.

## Reduced Service Costs

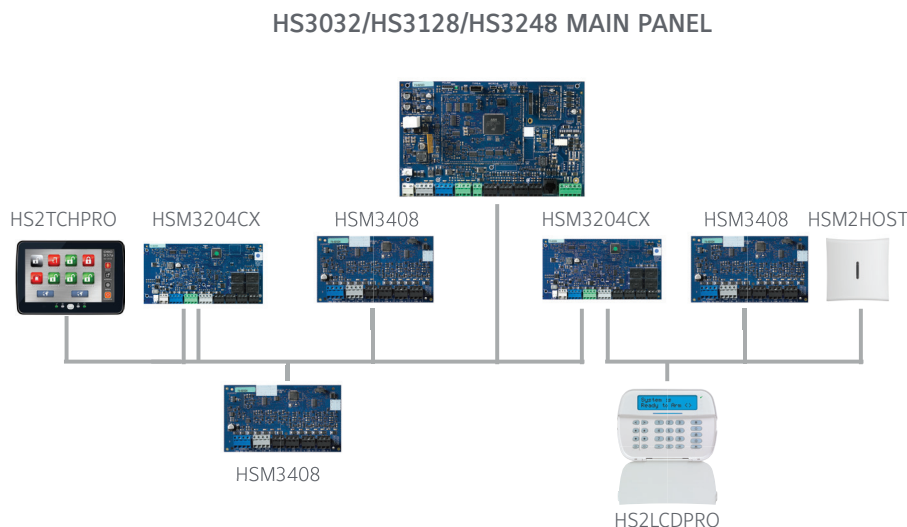
Using PowerG technology's Frequency Hopping Spread Spectrum (FHSS) & Time Division Multiplexed Access (TDMA) PowerSeries Pro is highly immune to noise and intentional RF jamming, greatly reducing false alarms. This added dependability significantly minimizes unnecessary service costs.

## Scalable and Future Ready

User-friendly and versatile by design, PowerSeries Pro supports multiple third-party integrations, including Building Management Software (BMS), video, and access solutions.

**PowerSeries Pro also offers the most on-board power** compared to other systems, giving you the ability to power as many devices as you need now and in future projects.

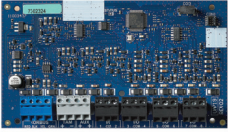
# SYSTEM OVERVIEW



## KEY FEATURES

- Expand system to accommodate current and future needs
- Add 3/15/30 additional hardwired zone expanders to the HS3032 / HS3128 / HS3248 panels
- All models connect to main panel via a 4-wire connection
- Simple wiring can be home run, daisy chained, or T-tapped
- Fully encrypted communication
- Bus repeaters allows for modules to be installed up to 14,000 feet (4,267 meters) from main panel
- 2 or 3 amp supervised power supplies allow for larger scale systems

# SPECIFICATION



## HSM3408 8 Zone Expander

- The HSM3408 is a zone expander that adds 1/8 fully programmable zones to any PowerSeries Pro security system
- Supports no end-of-line, single end-of-line (0.5 kΩ - 28 kΩ), double end-of-line (0.5 kΩ - 15 kΩ), or triple end-of-line loops (0.5 kΩ - 7.5 kΩ)
- Connect 3, 15 or 30 modules per system
- Simplify installation with easy to handle, removable terminal blocks
- Simplifies and enhances diagnostics by displaying zone resistance and Corbus voltages in real time

## HSM3WIFI Adapter

- The HSM3WIFI Adapter creates a wireless hotspot that can be used with either DLS 5 version 1.70+ or the PowerSeries Pro AlarmInstall Installation app
- SSID & Password configurable using the HSM3WIFI Configuration Manager available at [www.dsc.com](http://www.dsc.com)

### Specifications Ordering Information:

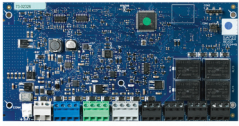
HSM3408: .....8 hardwired zone expander  
 Dimensions: ...83 mm x 145 mm (3.25 inches x 5.7 inches)  
 Board Current Draw: .....50 mA  
 Input Voltage: .....10.8 VDC - 12.5 VDC  
 Operating Environment: ...-10° C to + 55° C (14° F to 131° F)  
 Relative Humidity: .....5% to 93%

Enclosures:  
 Standard metal cabinet (North America): HSC3010C  
 Red cabinet (Canada only): HSC3010CR  
 Attack resistant cabinet (North America): HSC3030CA

### Specifications Ordering Information:

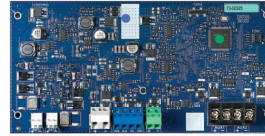
HSM3WIFI: .....USB WIFI Adapter  
 Spectrum: ..... IEEE 802.11 b/g/n  
 Frequency band: .....2.4 GHz  
 Security: .....WPA2  
 Supply voltage: .....USB VBUS 5 VDC ± 5 %  
 Current: .....120 mA @ 5 V (typical); 380 mA @ 5 V  
 Panel interface: .....USB Type-A, Male  
 RF distance: ..... > 20 M (65.5 feet) line of sight (in the metal panel cabinet with the door open)  
 Default SSID: .....HSM3WIFI  
 Default password: .....12345678  
 Static IP address: .....192.168.55.1

# SPECIFICATION



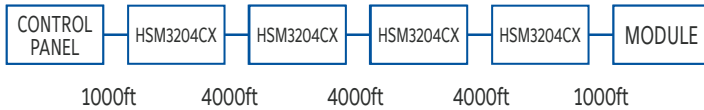
## HSM3204CX Power Supply with Corbus Repeater

- The HSM3204CX provides an additional 12 VDC, 2 amps of current along with 4 programmable Form C relay outputs
- Each module extends the bus up to 4000 feet. Four modules may be connected together in series for a total of 14,000 feet
- Connect a maximum of 1/8 modules per system
- Displays battery charge levels and all Corbus voltages for simpler diagnostics
- Simplify installation with easy to handle, removable terminal blocks



## HSM3350 Supervised 3 Amp Power Supply

- Uses HS65WPSNA Power Supply adapter
- Simplify installation with easy to handle, removable terminal blocks
- Provides enhanced diagnostics information for simpler diagnostics
- The HSM3350 provides an additional 12 VDC, 3 amps of power
- Dual battery backups individually supervised
- Connect 3 or 4 modules per system
- Displays battery charge levels and all bus voltages for simpler diagnostics



### Specifications

#### Ordering Information:

HSM3204CX: .....2 Amp Power Supply with Bus Extender  
 Dimensions: ...191 mm X 97 mm (7.5 inches x 3.8 inches)  
 Board Current Draw: .....25 mA  
 Input Voltage: .....18 VDC  
 Operating Environment: ...-10° C to + 55° C (14° F to 131° F)  
 Relative Humidity: ..... 5% to 93%  
 Aux output Voltage: .....10.8VDC – 12.5 VDC  
 Aux output current: ..... 2 Amps

#### Enclosures:

Standard metal cabinet (North America): HSC3010C  
 Red cabinet (Canada only): HSC3010CR  
 Attack resistant cabinet (North America): HSC3030CAR

### Specifications

#### Ordering Information:

HSM3350: .....3 Amp Power Supply  
 Dimensions: ...191 mm X 97 mm (7.5 inches x 3.8 inches)  
 Board Current Draw: .....35 mA  
 Input Voltage: .....18 VDC  
 Operating Environment: ...-10° C to + 55° C (14° F to 131° F)  
 Relative Humidity: ..... 5% to 93%  
 Aux output Voltage: .....10.8VDC – 12.5 VDC  
 Aux output current: ..... 3 Amps

#### Enclosures:

Standard metal cabinet (North America): HSC3010C  
 Red cabinet (Canada only): HSC3010CR  
 Attack resistant cabinet (North America): HSC3030CAR

# SPECIFICATION



## LE9080 Cellular Communicator

- The LE9080 is a cellular radio designed to provide alarm communications to a central monitoring station
- Mounts on main Panel Board
- Uses LTE-15ANT / LTE-25ANT / LTE-50ANT antenna extension kits.
- Used with Connect24 services



## HS65WPSNA (S) Power Adapter

- The HS65WPSNA is the Power Adapter used for the PowerSeries Pro main panel and its power supply modules
- The HS65WPSNAS is the Power Adapter used in Canada for the HS3032-KIT1CF

### Specifications

#### Ordering Information:

LE9080: .....Cellular Communicator  
 Dimensions: ....31 mm X 61 mm (1.2 inches x 2.4 inches)  
 Board Current Draw: .....28 mA  
 Input Voltage: .....3.4 VDC – 4.8 VDC  
 Operating Environment: ...-10° C to + 55° C (14° F to 131° F)  
 Relative Humidity: .....5% to 93%  
 Frequency bands in MHz:  
 LTE Bands:  
 LTE Band 12 – 700MHz AC  
 LTE Band 13 – 700MHz C  
 LTE Band 5 – 850MHz  
 LTE Band 4 – 1700 / 2100 MHz AWS1  
 LTE Band 2 – 1900MHz PCS  
 3G Bands:  
 FDD Band 5 – 850 MHz  
 FDD Band 2 – 1900 PCS  
 LTE Maximum transmission power: .....Class 3 200mW  
 3G Maximum transmission power: .....Class 3 250 mW

### Specifications

#### Ordering Information:

HS65WPSNA: ...18 VDC Power Adapter with IEEE Type B plug  
 HS65WPSNAS: 18 VDC Power Adapter without plug.  
 (Canada only)  
 Dimensions: ....191 mm X 97 mm (7.5 inches x 3.8 inches)  
 Input Voltage: .....100 VAC – 240 VAC 50/60Hz  
 Output Voltage: .....18 VDC  
 Operating Environment: .....-10° C to + 55° C (14° F to 131° F)  
 Relative Humidity: ..... 5% to 93%  
 Aux output current: ..... 3 Amps  
 Enclosures:  
 Standard metal cabinet (North America): HSC3010C  
 Red cabinet (Canada only): HSC3010CR  
 Attack resistant cabinet (North America): HSC3030CAR

# ABOUT US

## About Tyco

Tyco and its portfolio of brands form one of the largest security portfolios in the world. Engineers specializing in video security, access control, location-based security, and intrusion security give Tyco a competitive advantage when it comes to system integration. The company's focus is on turning data from sensors and systems into sharp insights and services that can solve those challenges and improve its customers' operations and performance. With more than a billion sensors and devices already in place across the globe, Tyco is in a unique position to deliver that future and make the Internet of Things work for its customers.

Visit [www.tyco.com](http://www.tyco.com) to find out more.

## About Johnson Controls

Johnson Controls is a global diversified technology and multi industrial leader serving a wide range of customers in more than 150 countries. Our 120,000 employees create intelligent buildings, efficient energy solutions, integrated infrastructure and next generation transportation systems that work seamlessly together to deliver on the promise of smart cities and communities. Our commitment to sustainability dates to our roots in 1885, with the invention of the first electric room thermostat. We are committed to helping our customers win and creating greater value for all our stakeholders through strategic focus on our buildings and energy growth platforms. For additional information, please visit [johnsoncontrols.com](http://johnsoncontrols.com) or follow us [@johnsoncontrols](https://twitter.com/johnsoncontrols) on Twitter.

© 2019 Johnson Controls. All rights reserved.  
PN 30002605