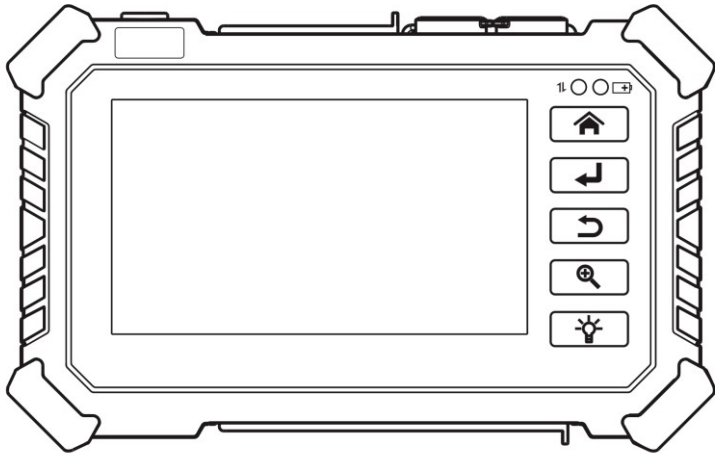


CCTV TESTER

User Manual



(V01.00)

- Thank you for purchasing the IP camera tester. Please read the manual before using the IP camera tester and use properly.
- For using the IP camera tester safely, please first read the 「 Safety Information 」 carefully in the manual.
- The manual should be kept well in case of reference.
- Keep the S/N label for after-sale service within warranty period. Product without S/N label will be charged for repair service.
- If there is any question or problem while using the IP camera tester, or damages occurred on the product, please contact our technical department.

Content

1. Safety information	2
2. IP Camera Tester Introduction	3
2.1 General	3
2.3 Function interface	3
3. Operation	5
3.1 Installing the Battery	5
4. IP camera test	6
4.1 Power output	6
4.2 IPC Test pro	7
4.3 IP discovery	7
4.4 Rapid ONVIF test	8
4.5 Non-Onvif IP camera test	27
5. Analog camera test (* Optional)	28
5.1 HD CVBS	28
5.2 Auto HD (* Optional)	29
5.3 CVI camera test (* Optional)	30
5.4 TVI camera test (* Optional)	32
5.5 AHD camera test (* Optional)	33
6. Other function	34
6.1 Network tool	34
6.2 RJ45 cable TDR test	36
6.3 Cable Tester	37
6.4 Cable Tracer (* Optional)	38
6.5 PoE / DC12V 3A power output	40
6.6 Update	41
6.7 File explorer	42
6.8 System Setting	43
7. Specifications	46
7.1 General Specifications	46

1. Safety information

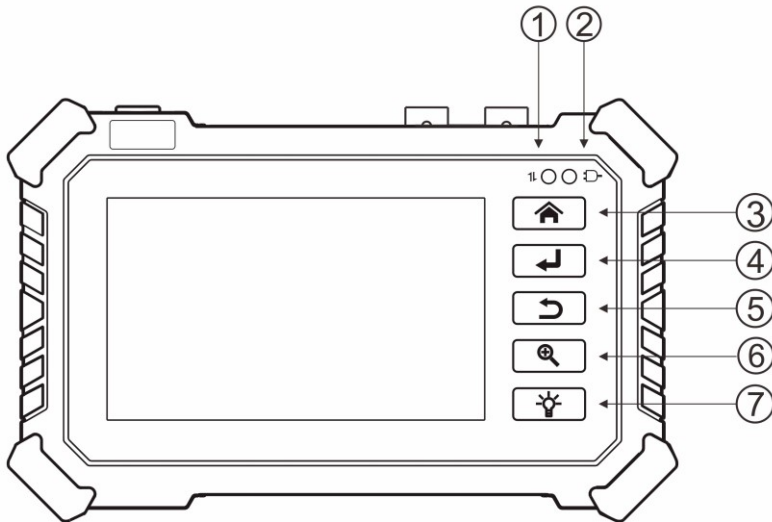
- ◆ The tester is intended to use in compliance with the local rules of the electrical usage and avoid to apply at the places which are inapplicable for the use of electrics such as hospital, gas station etc.
- ◆ To prevent the functional decline or failure, the product should not be sprinkled or damped.
- ◆ The exposed part of the tester should not be touched by the dust and liquid.
- ◆ During transportation and use, it is highly recommended to avoid the violent collision and vibration of the tester, lest damaging components and causing failure.
- ◆ Don't leave the tester alone while charging and recharging. If the battery is found severely hot, the tester should be powered off from the electric source at once. The tester should not be charged over 6 hours.
- ◆ Don't use the tester where the humidity is high. Once the tester is damp, power off immediately and move away other connected cables.
- ◆ The tester should not be used in the environment with the flammable gas.
- ◆ Do not disassemble the instrument since no component inside can be repaired by the user. If the disassembly is necessary indeed, please contact with the technician of our company.
- ◆ The instrument should not be used under the environment with strong electromagnetic interference.
- ◆ Don't touch the tester with wet hands or waterish things.
- ◆ Don't use the detergent to clean and the dry cloth is suggested to use. If the dirt is not easy to remove, the soft cloth with water or neutral detergent can be used. But the cloth should be tweaked sufficiently.



2. IP Camera Tester Introduction

2.1 General






The 4 inch IPS touch screen IP camera tester is designed for maintenance and installation of IP cameras, analog cameras, TVI, CVI, AHDcameras, as well as testing 8K H.265 /4K H.264 camera by mainstream. The meter supports many ONVIF and analog PTZ control. The combination of touch screen and touch control keys make the IP camera tester very user- friendly.

2.3 Function interface

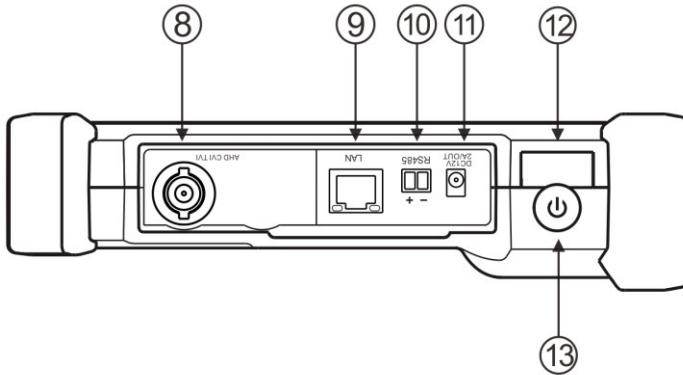


1		The RS485 data transmission indicator: it lights red while the data is being transmitted.
2		The charge indicator: it lights red while the battery is being charged. As the

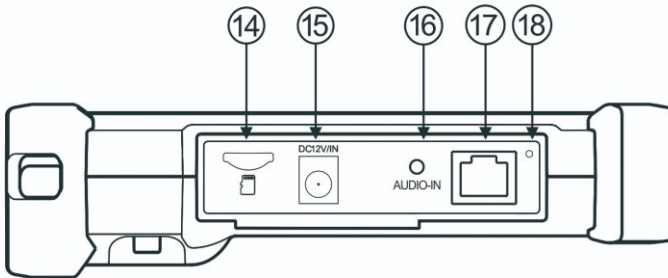
charging is complete, the indicator turns off automatically.

3		Menu key, press to return to the main menu interface, or pop-up shortcut menu bar.
4		Confirm key, after the software is selected, press to open the software; Verify when setting parameters. Long press it to capture screen interface.
5		Return key, return or cancel while setting parameters of the menu.
6		4x zoom the image display.
7		Led, turn on/off LED lamp.

Top interface



Bottom interface




8	HD IN (BNC interface), video image /AHD/TVI/CVI signal input (BNC interface) (Optional).
9	LAN interface, Ethernet test interface, POE power supply output interface. (It can be used to test POE and non-POE webcams).
10	RS485 Interface: RS485 communication for the PTZ.
11	DC12V/3A power output, it can be used to power the camera.
12	LED lamp, it is used for lighting in dark environments.
13	Power key, press more than 2 seconds, turn on or off the device ,short press to turn on or off the menu display. You can also open File explorer software by pressing the key twice quickly.
14	External Micro SD card slot, supports up to 32GB.
15	DC 12V/IN, DC 12V/1A charging interface.
16	AUDIO IN, audio input.
17	UTP/SCAN, the interface that test network cable RJ45 connector line sequence, can also be used to find the network cable(cable tracer). (The cable tracer is optional)
18	Cut-off button, when the instrument system is abnormal, press it to make the instrument power off immediately. After restarting the instrument with the power key, it can be restored to normal use.

3. Operation


3.1 Installing the Battery


The tester has built-in lithium ion polymer rechargeable battery. In order to ensure the safety of long-distance transportation, it is necessary to disconnect the battery cable in the battery compartment or use insulation strip to isolate the battery!

Before use, please connect the battery cable or remove the insulation strip in the battery compartment. Usually it doesn't need to disconnect the cable or use the

insulation strip at the normal use. Long press the power key  to turn on/off.

▲ Notice 1: Pls use the original adaptor and connected cable of the device! When the battery icon is full or the charge indicator turns off automatically, indicate the battery charging is completed.

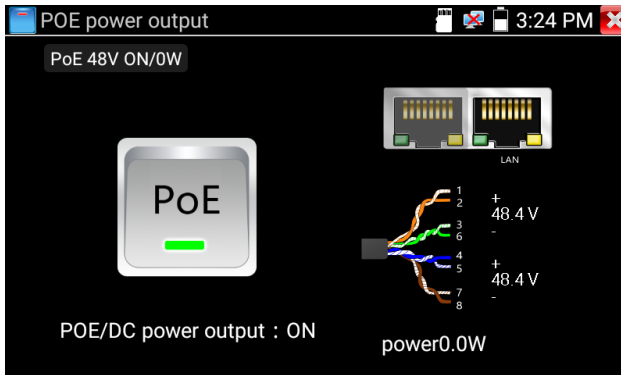
▲ Notice 2: When the Charge Indicator  turns off, the battery is approximately 90% charged. The charging time can be extended for about 1 hour and the charging time within 12 hours will not damage the battery.

▲ Notice 3: When the system is abnormal, please disconnect all the external connection wires, long press the power key  until the device is automatically closed or press the cut-off button, and then long press the power key again to restart the instrument normally.

4. IP camera test

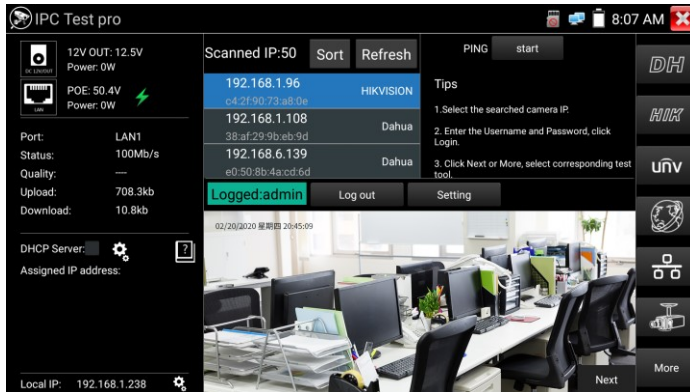
4.1 Power output

Camera can be powered from the DC 12V/3A output or by Power over Ethernet.



4.2 IPC Test pro

Camera test often need to open multiple apps, "IPC TEST PRO" app, using new technology and combine multiple functions to one APP, it can increase efficiency.




Application:

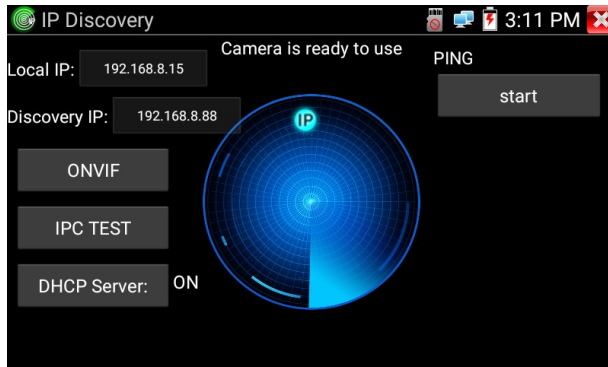
Support multi-segment IP address scan, can visually display camera brand, click IP address to display the image. Connect IP camera, can supply the power to PoE camera. Real-time display network port connection status.

By one key to connect camera test tool, browser can login and configure camera.

Batch activate Hikvision and Dahua cameras.

4.3 IP discovery

Press IP discovery  tester auto-scan the whole network segment IP, as well as auto-modify the tester's IP to the same network segment with the scanned camera's IP. The meter auto-search whole network segment IP, and auto- add the IP of different network segments.



Local IP: Tester's IP address, Tester can auto-modify the tester's IP to the same network segment with the scanned camera's IP.


Discovery IP: Connected tester equipment's IP address. If the camera connected to the tester directly, tester will display the camera's IP address, if tester connects to Local Area Network, it displays the current IP address.

Start: PING function, click "Start", can PING camera's IP.

ONVIF: Rapid ONVIF Quick link.

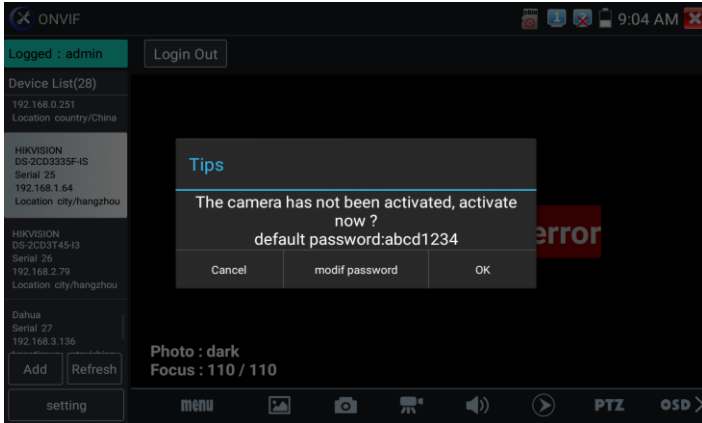
IPC TEST: IPC TEST Quick link, Non-Onvif IP camera test.

4.4 Rapid ONVIF test

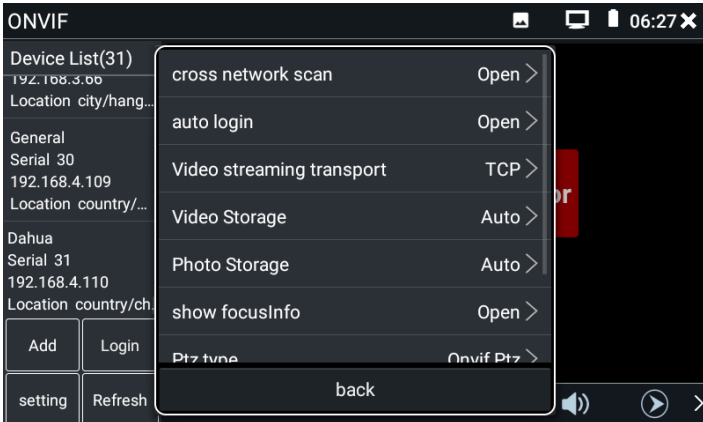
Click "ONVIF" software icon  , the instrument automatically scan all ONVIF cameras in different network segments. It lists cameras name and IP address on the left of screen. Click "Login Out", enter the correct camera user name and password, then click "Login", the tester can automatically login the camera and display the camera image. By default, the software logs in with the password "admin". If you change the password, the software logs in with the changed password.

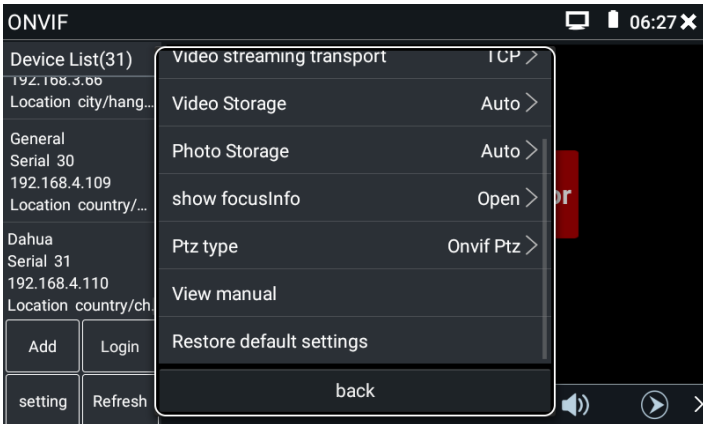
Click the "Refresh" option and the tester will scan the ONVIF camera again. Click "Device List" to display the new ONVIF camera. The tester will display the relevant information and images of the IP camera. Activate HIKVISION Camera: When connected inactivated HIKVISION Camera, tester can auto recognized, and prompt

"The camera have not been activated, activated now?", then click "OK" to start activate.



Click the "Settings" option in the lower left corner, and the Settings menu of ONVIF software will pop up.





Cross network scan: When this column shows the open state, the device list of ONVIF software can display the cameras of different network segments searched by "IP Discovery" software, otherwise only the cameras of the same network segment as the tester are displayed.

Auto Login: After open this function, tester can auto login camera and display camera image. (The login password is the same with last time, the first time using password is the default password "admin")

Video streaming transport: UTP and TCP protocol.

Photo storage: Store photos with automatic or manual naming.

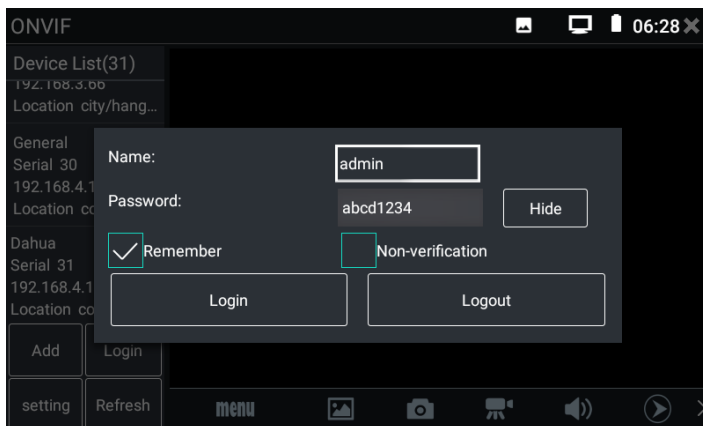
Video storage: Store video with automatic or manual naming.

View manual: Open the instructions for the software.

Restore Defaults settings: Revert "ONVIF" software to default settings.

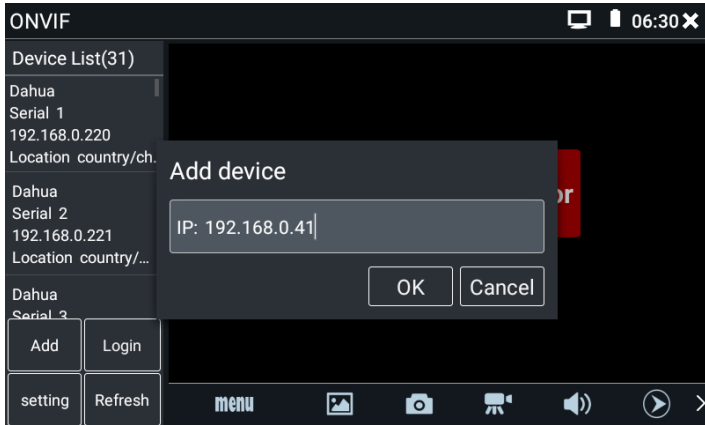
Click the IP address of a certain camera, enter the user name and password of the camera, and click "Login" to see the image of the camera. "Non-verification" option is generally unchecked, which means to log in the camera with an empty password. If

the camera requires a password to log in, it will cause an error of user name and password.



Some network cameras may not scan automatically, you can manually add the camera. Tap "Add" in the bottom left and users can manually add a camera. Click "Refresh" and the tester scans the ONVIF network camera again. Click on the device

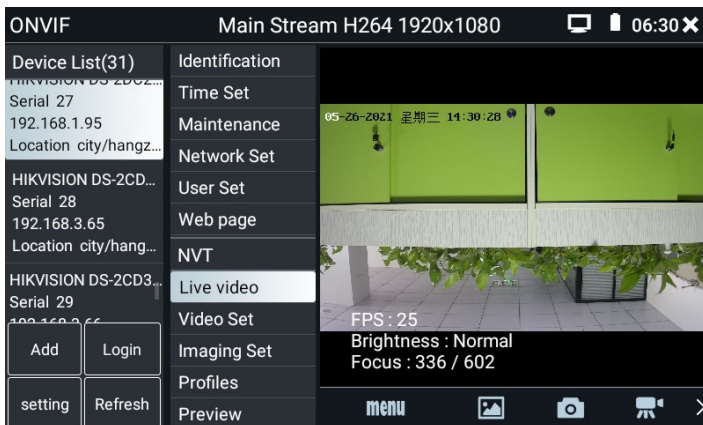
displayed in the "Device List" on the left to display the relevant information and Settings for the network camera.



Click "MENU" icon to open camera setting.

Live Video: Click "Live Video" to live webcam images. Double click the image display area, the tester displays the image in full screen; When the image is displayed in full screen, double-click the screen to return to the original state.

When the image is displayed in full screen, the thumb and index finger slide outward at the same time to enlarge the image, and then click on the screen to move the image so that you can see the details of every corner covered by the camera.



ONVIF PTZ control: Press the finger in the image display area and slide to the left, right, up and down. The spherical webcam will rotate accordingly. Two fingers press in the image display area and slide outward to expand or inward to shrink. The spherical webcam will zoom in or push away accordingly. PTZ rotation direction is displayed on top left corner of the image.



IP camera video settings: Click "Video Set" to enter the main stream setting interface of webcam video make the required changes and click OK to save. The main stream parameters inside the webcam change as well.

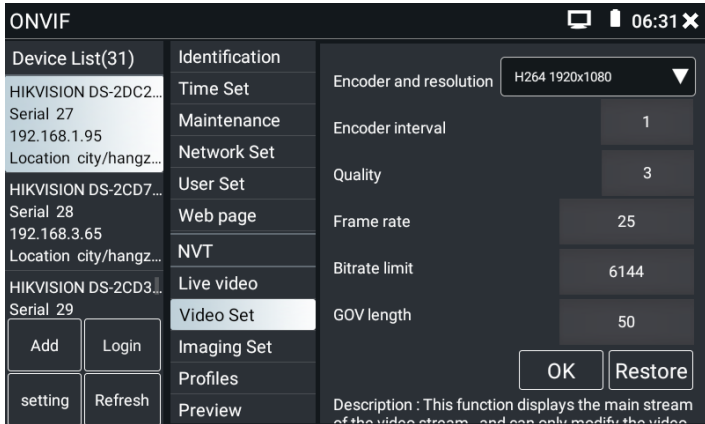
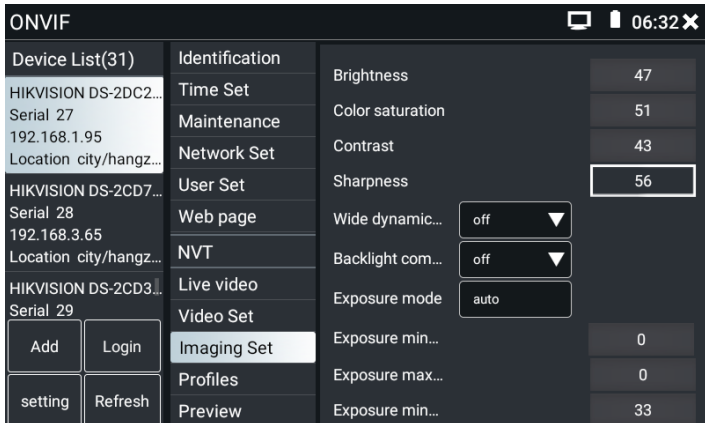
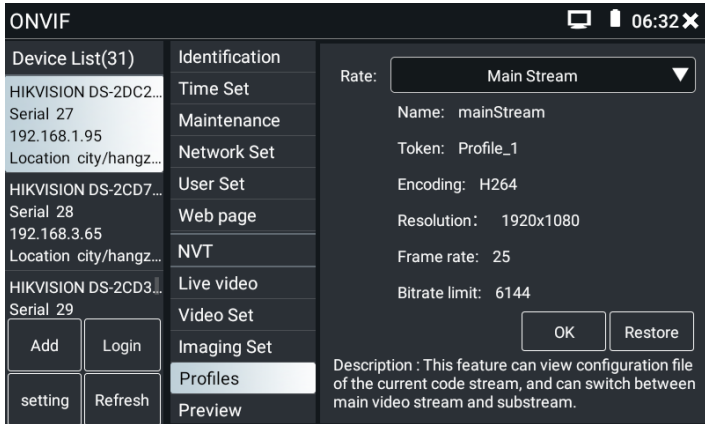


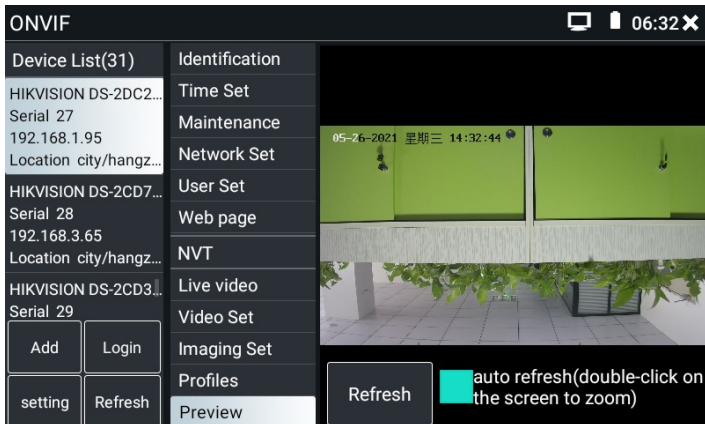
Image setting: Click "Imaging Set" to adjust image brightness, saturation, contrast, sharpness and backlight compensation mode. The main stream parameters inside the webcam change as well.



Profiles: Click "profile" to view the current configuration information of the video stream. You can modify the video stream type of the ONVIF software preview image and switch between the main stream and sub stream.



Preview pictures: Click "Preview" to view a thumbnail of the video stream from the camera. The image is not a live video. It is played frame-less.



Identification: Click "Identification" to view information of the camera.

The screenshot shows the ONVIF interface with the 'Identification' tab selected. The interface is divided into three main sections:

- Device List (31):** A list of cameras with columns for Name, Serial, IP Address, and Location. Three cameras are visible:
 - HIKVISION DS-2DC2... Serial 27, 192.168.1.95, city/hangz...
 - HIKVISION DS-2CD7... Serial 28, 192.168.3.65, city/hangz...
 - HIKVISION DS-2CD3... Serial 29
- Identification Tab:** A vertical menu with options: Time Set, Maintenance, Network Set, User Set, Web page, NVT, Live video, Video Set, Imaging Set, Profiles, and Preview.
- Camera Details:** A table showing the following information:

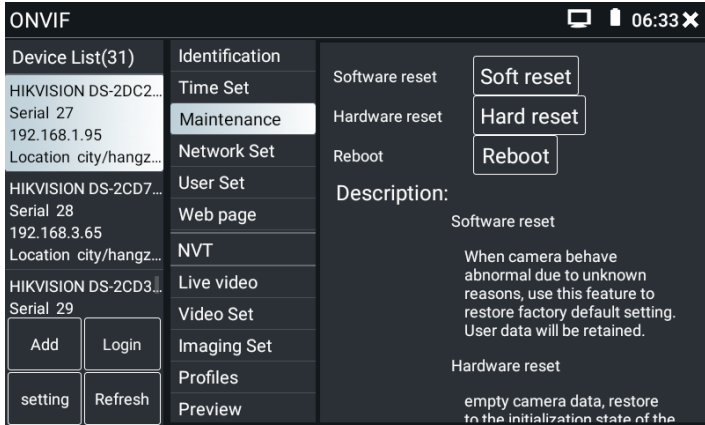
Name	HIKVISION DS-2DC2402IW
Location	city/hangzhou
Manufacturer	HIKVISION
Model	DS-2DC2402IW-D3/W
Hardware	88
Firmware	V5.5.12 build 171214
Device ID	DS-2DC2402IW-D3/W20...
IP Address	192.168.1.95
MAC Address	94:e1:ac:90:d6:c0
ONVIF version	16.12

Time setting: Click on the "Time Set" option, choose "Set manually", select the correct time zone, and can be Set in the column of "Set manually" camera time, Set up, and click "OK". If you choose "Synchronize with computer time", click "OK" and the current time of the camera will be the same as the instrument.

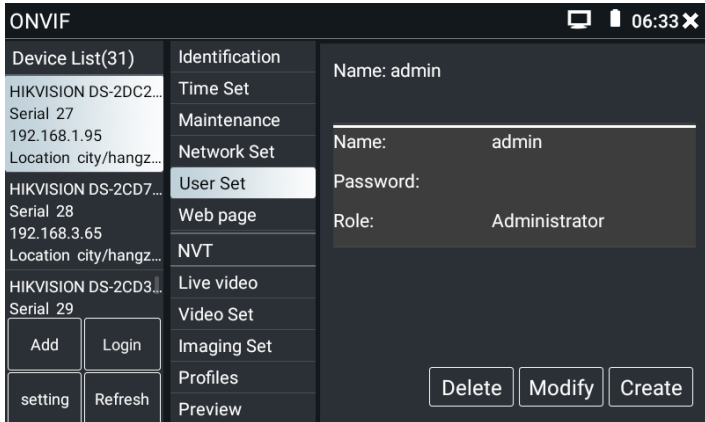
The screenshot shows the ONVIF interface with the 'Time Set' tab selected. The interface is divided into three main sections:

- Device List (31):** Same as the previous screenshot, showing the list of cameras.
- Time Set Tab:** A vertical menu with options: Time Set, Maintenance, Network Set, User Set, Web page, NVT, Live video, Video Set, Imaging Set, Profiles, and Preview.
- Time Configuration:**
 - Camera Time: 14:33:13 2021/5/26 (Local)
 - Time zone: (UTC-08:00)Pacific Time (USA and Canada)
 - Time Set: Synchronize with computer time
 - System Time: 06:33:14, 2021/05/26
 - Buttons: OK, Restore
 - Text: time zone and the system time just to camera time changes provide a reference, time zone and the system time can not be changed.
 - Footnote: 1. reference time zone: selected reference time

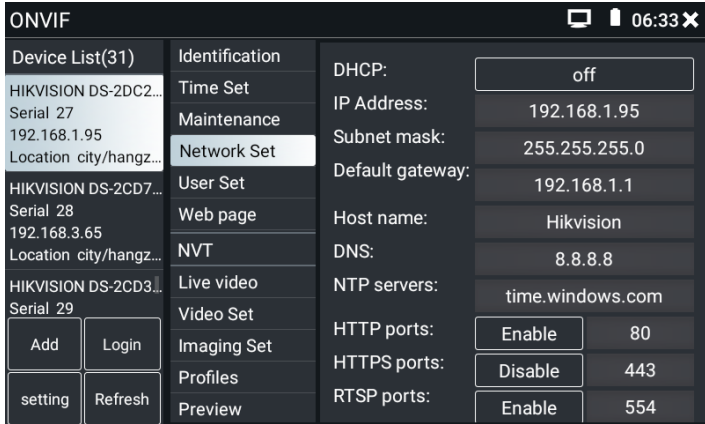
Maintenance: For camera software reset or restore to factory settings.



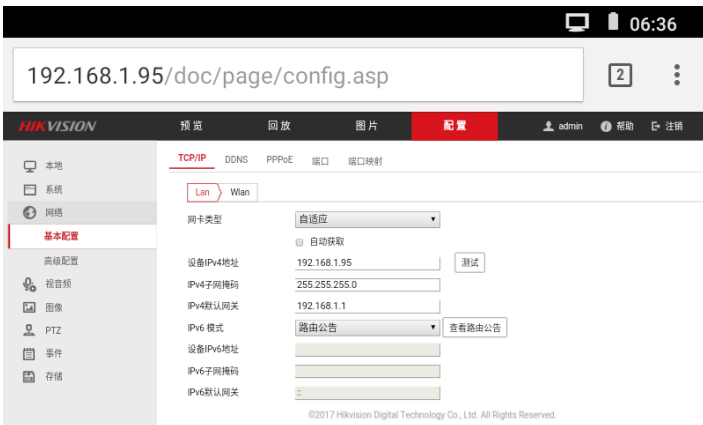
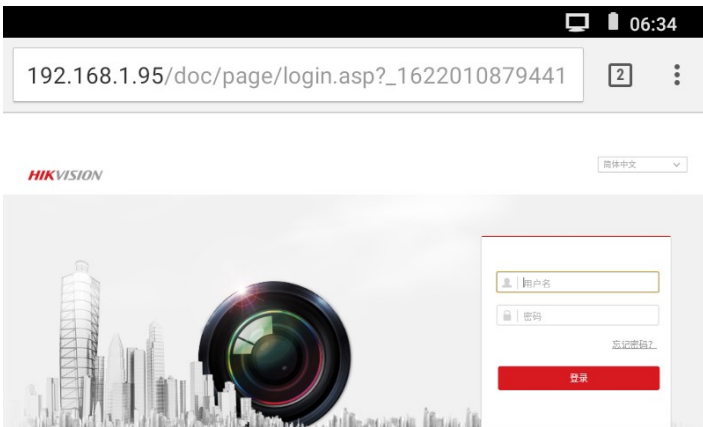
User Set: Changes the admin user password set when the webcam is activated.




Network setting: Some cameras do not support changing the IP address through the ONVIF protocol, so in this software, the IP may not change after the changes are saved. If the camera cannot modify the IP, the corresponding manufacturer test tool in the instrument can be used to modify the IP address.



In addition, you can use the browser (tap on “Chrome” icon), in the browser address bar input the camera's IP address, to log in the camera's web page to modify the parameters such as IP. When logging in the camera webpage of the instrument's browser, it will prompt to download the plug-in. Ignore this prompt and go directly to the camera parameter setting interface to modify and save the parameters. The camera plug-in is only supported on Windows, and our instrument is android, so the plug-in cannot be installed successfully. Generally, the plug-in is only related to the function of web page browsing image. If the plug-in is not installed successfully, it only affects the preview of web page image and does not affect the parameter modification function of the web page management of the camera.



Zoom in image: When image input, slide in the upper right corner of the app to

invoke a virtual keyboard. Press the zoom view key  to enter the electronic magnification mode. Press it again to exit electronic magnification mode. When electronic magnification mode is on, press the ZOOM+ or ZOOM- key to

reduce or enlarge the image. Two fingers slide outward in the image display area to enlarge the image or slide inward to reduce the image. Use the arrow key to move the image or press on the image area and slide to the left, right, up or down to do this.



If it is network video input to the tester, as the tester supports resolution up to 1080p, the input image will be very clear after it is enlarged. This is greatly helpful for the installers to ensure the IP camera's video coverage and decide the IP camera's install site.

Select relative function on the bottom Toolbar to operate, "Snapshot" , "Record", "Photos", "Video playback", "Storage set", "PTZ control" etc.



Snapshot: Click bottom "snapshot" icon to get the currently displayed image and generate a photo, store in the internal storage or external SD card.

When the storage mode in the interface of "ONVIF setting" is changed to manual, a window of "please Input" will pop up after the tester takes a photo. You can enter the file name in Chinese, English or digital form for storage. When the storage mode in the "Settings" interface is automatic, the tester will store it by itself after taking photos, and the prompt window of "please Input" will no longer pop up.

Record: When you click the "record" icon at the bottom, the video image of the current camera begins to be recorded. A red recording icon appears on the screen and starts blinking, along with a timer indicating how long the video recording has been going on. Click the "record" icon again to stop recording and store it in internal storage or external SD card. The recording with this device is temporary and should not last more than an hour. If the video will last longer than 1 hour, the video may fail to be saved. You need to manually click stop the video every hour to save it.

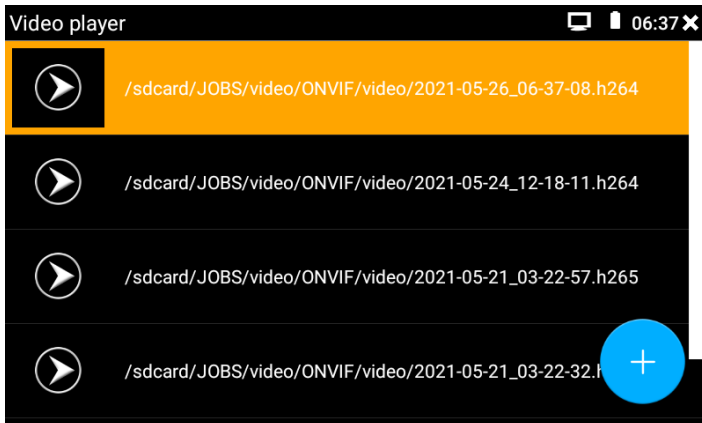
When the storage mode in the "ONVIF Settings" interface changes to manual, a "please Input" window will pop up when the instrument records. You can enter the file name in Chinese, English or digital format. When the storage mode of the "Settings"

interface is automatic, the instrument will be stored automatically after recording, and the "please Input" prompt window will not pop up again.



Playback: Click the "Playback" icon to view the saved videos. Click on the video you want to play to play. Press “RETURN” key to finish playing.

To rename or delete a photo or video file, press and hold the file name until the selection box pops up and you can proceed accordingly.





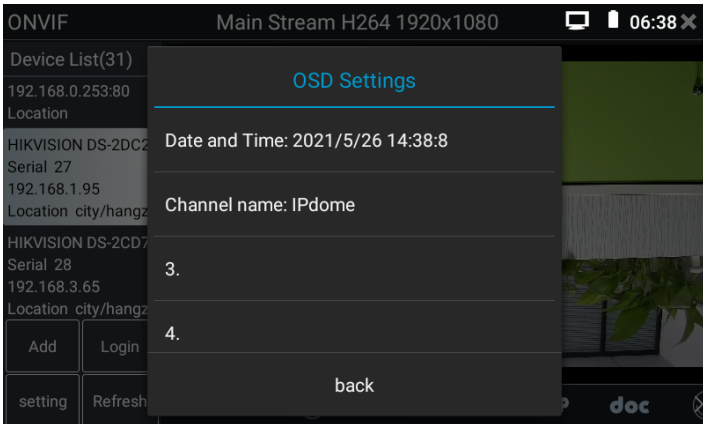
Video files can play in the Video player on the main menu.

Audio: Tap the speaker button on the bottom toolbar to start the audio test of the webcam. Audio test turned off by default.

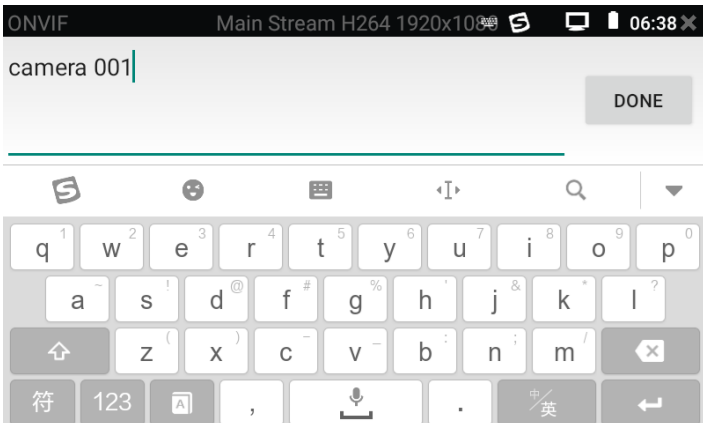


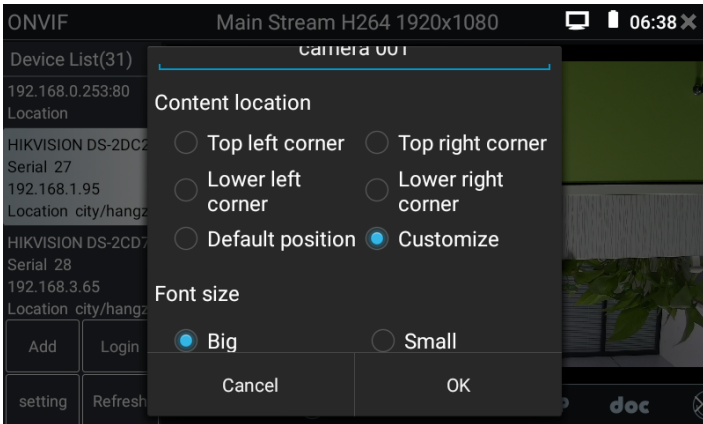
OSD Menu: Click “OSD” icon and popup the OSD menu. You can modify the time display position of the camera and superimpose the channel character name of the camera.





After channel selecting, you can edit the channel name, modify the display position, and switch the font size. Select "default position" in "content location" is without modification. Select "Customize" to arbitrarily adjust the channel name and display location. Click "OK" and the effects will appear. Press “RETURN” key or click any area of the screen to return to the upper layer of the interface.





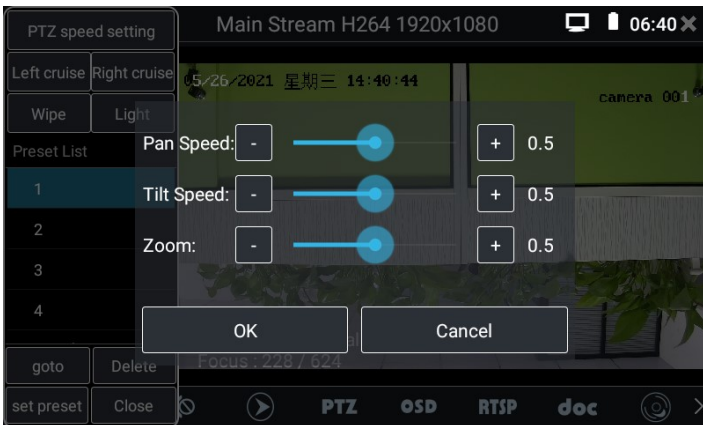
PTZ

Set preset position: Move the camera to preset position, enter the preset number on the Bottom right corner, and click “set preset” option to complete position preset.

Call the preset position: Select the preset number on the left list, click "goto" option to call preset.



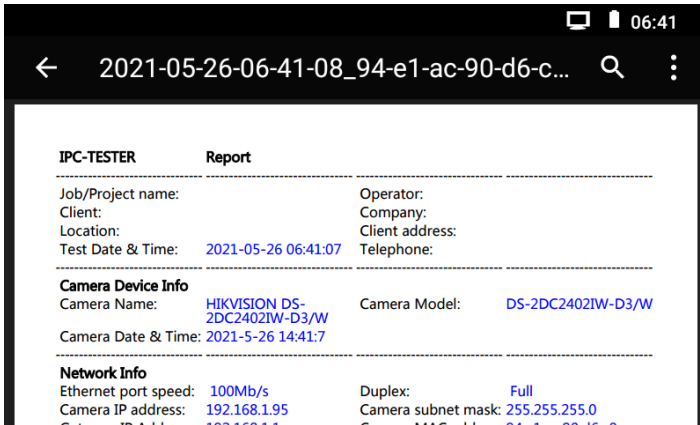
PTZ Speed setting: Camera speed Settings for horizontal and vertical rotation.



RTSP: Get RTSP address of the current camera.

Doc: Auto generate test reports document of camera, click "Create documents" option to generate the document. Click Preview to view the report document. Enter the


camera test information, click "Create documents" to complete the report. Click "Doc" icon again, you can find the report document.



Icons description: Click the question mark icon to see the name description of each function icon at the bottom.

4.5 Non-Onvif IP camera test

Display image from the 4K H.265 camera by mainstream.

 Note: Currently, the IPC Test App only supports some brands' specific IP cameras, these include specific models made by ACTI, AXIS, Dahua, Hikvision, Samsung, and many more. If the camera is not fully integrated, please use the ONVIF or RTSP apps.



Local IP: This is the tester’s IP address. Click “Edit” to enter “IP setting” and change the tester’s IP address settings.

IP camera type: Click on the IP Camera type to select the Manufacturer and model number of the integrated IP camera.

Manual: Click IP camera type, list Honeywell, Kodak, Tiandy, Aipu-waton, ACTi, WoshiDA IP camera etc. If the brand has offered official original protocols, pls select camera type, input IP camera address, user name and password, click “official” to enter the camera image display interface.

Stream code: When test camera via RTSP, you can select mainstream or sub stream to test (if camera’s RTSP have not been start or without, it will prompt “auto match” fail, please switch to manual selection.

IP Camera's IP: Enter the IP camera’s IP address manually or click “Search” to auto-scan for the IP camera’s IP address. It is better to directly connect the IP camera to the tester so the search results will only display the camera’s IP address.

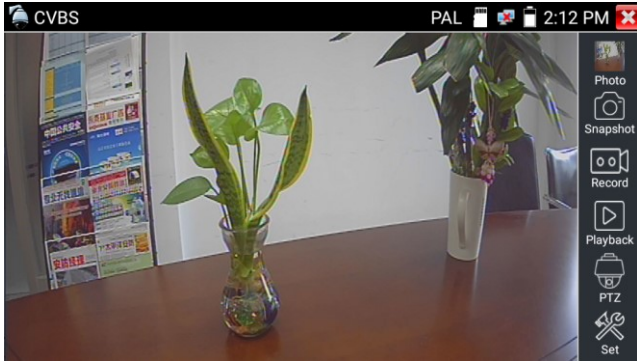
IPC Port: When you select the IP camera type, it will default the camera’s port number and doesn’t need to be changed.

After all settings are completed, click “Enter” to view the live video.

5. Analog camera test (* Optional)

5.1 HD CVBS

Analog camera test and PTZ control.

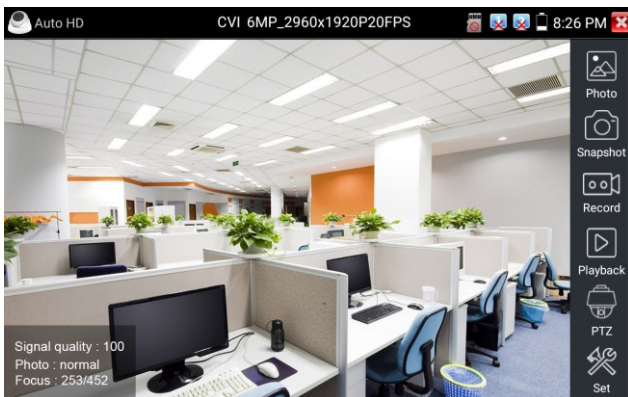


⚠ Check and set the protocols, address, interface and baud, all must be consistent with the dome camera, then the IPC tester can test. After setting the parameter, the tester can control the PTZ and lens.

5.2 Auto HD (* Optional)

Automatically recognize type and resolution of TVI/CVI/AHD camera and display image. Support coaxial PTZ and call OSD menu. Support CVBS and 8MP TVI/CVI/AHD cameras. Select relative function on the right side toolbar to operate, functions including “Photos”, “Snapshot”, “Record”, “Playback”, “PTZ”, “Set”.

Double-taps on the screen to make the image displayed full screen.



5.3 CVI camera test (* Optional)

When HD CVI signal input, the tester will display the image resolution at the top of the screen. Double-taps on the screen to make the image displayed full screen.

The tester supports resolution up to 3840 x 2160P 12.5/15 FPS.

(1) PTZ control

1.1 Coaxial PTZ control

Click the icon “PTZ” on the right toolbar to do the corresponding setting.

“Port”: select coaxial control

Enter PTZ address to perform parameters setting.



The PTZ address in the tester must be consistent with the dome camera or decoder, then the IPC tester can test. After setting the parameter, the tester can control the PTZ and lens.

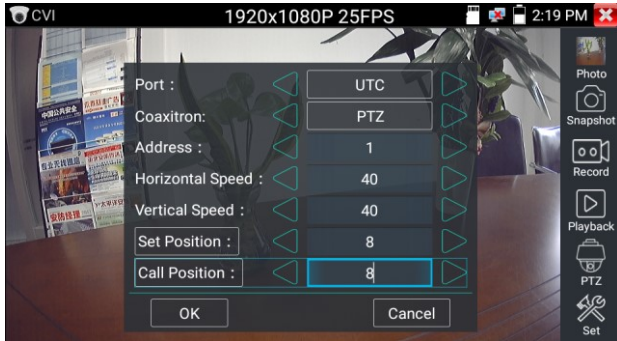
Set preset position:

Move the PTZ camera to the preset position, tap it and input preset position number.

Tap “Set position” to complete set preset position.

Call preset position:


Tap the preset position area, input preset position number. Tap “call position” to complete call preset position.

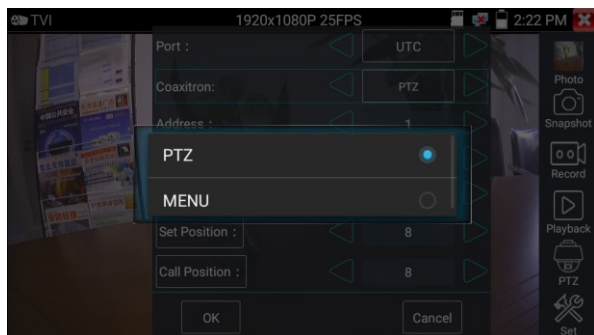



1.2 RS485 control

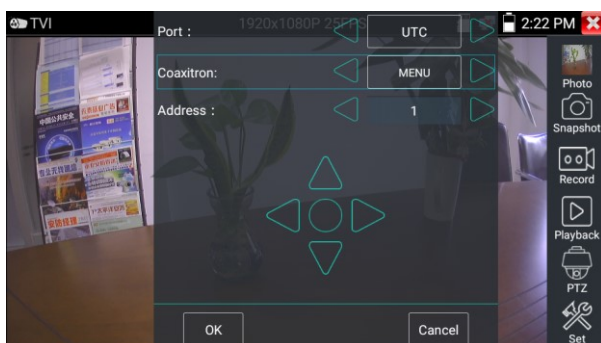


(2) Coaxial camera menu setting

Input calling dome camera menu address code, you can press the key “Enter” or click the icon  to call the dome camera menu.



Input calling dome camera menu address code, after finishing the parameter settings, you can press the key “Enter” or click the icon  to call the dome camera menu.



5.5 AHD camera test (* Optional)

When AHD signal input, the tester will display the image resolution at the top of the screen. Double-taps on the screen to make the image displayed full screen.

The tester supports resolution up to 3840 x 2160P 15 FPS.

(1) Coaxial PTZ control

UTC control: Select “PTZ or PTZ-2” (AHD camera has two different order, if the “PTZ” not working, pls go “PTZ-2”)




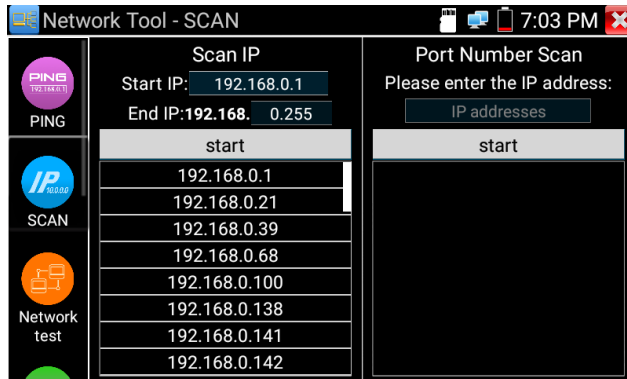
If to coaxial PTZ control the AHD camera, no parameters setting is needed.

6. Other function

6.1 Network tool

(1) IP address scan

Connect the cable to the LAN port, click icon  to enter, set your IP address search range by changing the Start and End IP addresses. Click the “Start” button to scan the IP address range. You can also input an IP address in the Port Number Scan to scan for open ports.



(2) PING Test

Application: PING testing is the most conventional network debugging tools. It is used for testing if the connected. IP camera or other network equipment’s Ethernet port is working normally and the IP address is correct.

It’s normal that the first data packet will be lost when test start.

(3) Network test (Ethernet bandwidth test)

To use the Network tester, you will need two IP testers. One is used as a Server and the other as a Client. Both devices must be on the same network segment in order to communicate.

(4) Port Flashing

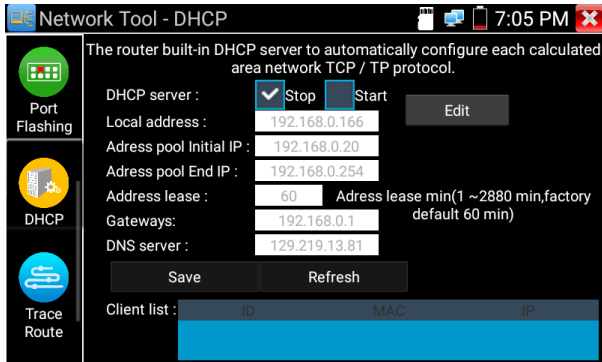
Application:

The tester will send special signals to make the connected LAN port flicker at special frequency, which will enable the installers to easily and quickly find the connected Ethernet cable. This function can prevent mistakenly insertion or disconnection non-corresponding cable to artificially interrupt network connection.

(5) DHCP server

Click on the DHCP icon to open the DHCP server app. Select the “Start” check box at the top and make any desired changes to the network settings. Click “Save” to start assigning dynamic IP addresses for IP cameras and other networked devices. Click the

“Refresh” button to check your Client list.



(6) Trace route


It is used to determine path of the IP packet access target.

Note: Trace route testing results only for reference, for accurate test route tracking, Pls use professional Ethernet tester.

(7) Link monitor

This app is used to see if an IP address is occupied by other network devices. This will avoid new address conflicts.

6.2 RJ45 cable TDR test

Connect cable to tester’s LAN port, click icon “” to enter app.



Single test: Test cable status, length and attenuation.

Repeat test: Continue to test cable status, length and attenuation.

Status: After link up, screen display “online”, if not link up or open circuit, screen display “open circuit”, if cable pair is short circuit, screen display “short circuit”.

Length: The max test length is 180 meters, when cable is open circuit or short circuit, can test the cable length, if screen display “online”, the testing result would be not accurate.

Cable quality test: Green is good quality cable, Yellow is poor quality cable, Red is water poured cable, the attenuation value will be displayed when cable over 10 meters.

Advanced Test: Test cable pair status, length, attenuation, reflectivity, impedance, skew and other parameters.

Attenuation reflectivity: After link up, if reflectivity value is 0, it is the best quality communication

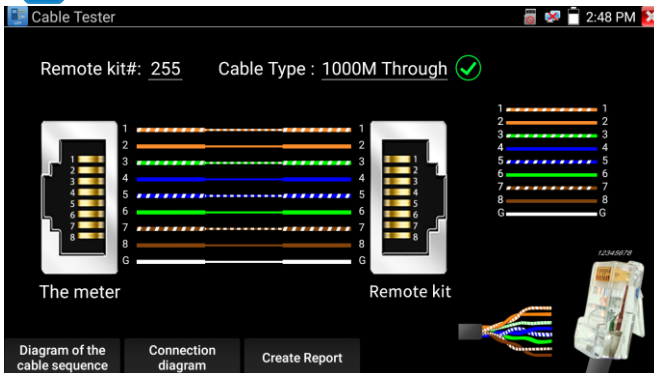
Impedance: After link up, if the impedance value is 100 Ω , it is the best quality communication, the range is generally in 85-135 Ω

Skew: After 1000M link up, if skew value is 0ns, it is the best quality communication, if over 50ns, will cause a Bit Error Rate in the transmission.

Click “Help”, check the instruction of all parameters.

6.3 Cable Tester

Click icon  to enter.



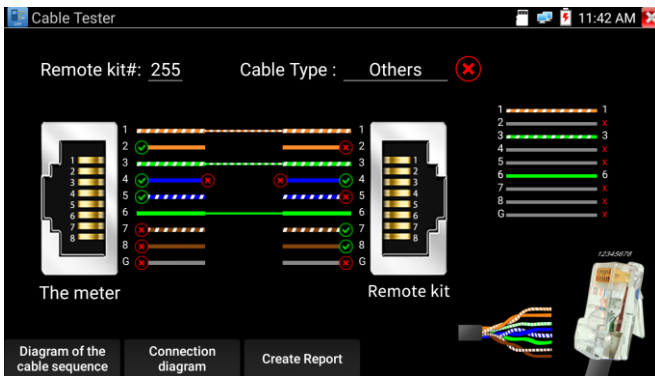
Test LAN cable or telephone cable.

Connect LAN cable or telephone cable with the CCTV tester and cable tester. And then the connecting status, cable type and the sequence of wires as well as the serial number of the cable tester kit will be displayed.

The number of the cable tester is 255.

If need several different number other types cable testers, should pay the additional cost.

Quickly detect the near-end, mid-end and far-end fault point of RJ45 cable connector

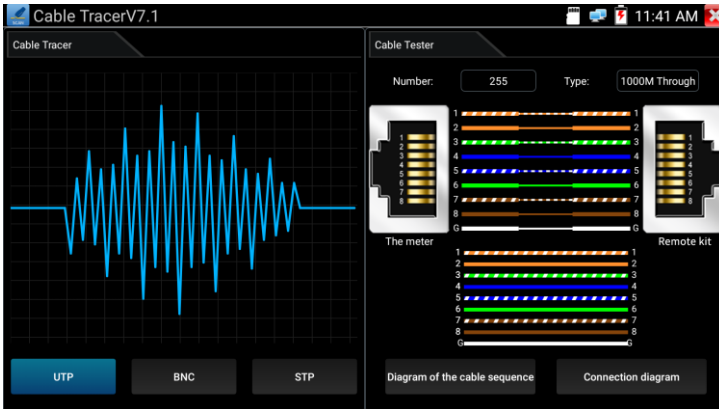


Cable test:

Tap "Diagram of the cable sequence", pop up the connection diagram of Straight-through cable and crossover cable. And can create the testing report.

6.4 Cable Tracer (* Optional)

Connect UTP cable or telephone cable to tester bottom port "UTP/SCAN", or use adapters and cables to connect other cables, such as BNC cable. Or use BNC adapters and alligator clip cable to connect BNC cable etc.



Note: If use BNC adapters and alligator clip cable to connect BNC cable etc. Please switch to “BNC mode”, if connect shielded cable, please select “STP mode”.

UTP mode is used for searching the normal network cable or other cables. “BNC mode” for finding BNC cable after connecting adapter. STP mode is used for searching the shielded network cable.

Rotating the switch of cable tracer to turn on. Clockwise rotation increases sensitivity, anticlockwise rotation reduce sensitivity.

Cable tracer and Cable tester app in the same interface. It is better to judge whether the search network cable is accurate. Connect the other end of the tested network cable to the "UTP" port of cable tracer, the cable sequence, continuity, test box number and network cable type will be displayed on the right side of the meter interface. The "G" indicates the continuity of the shielded network cable.

The 1-8 indicators of cable tracer will flash according to the cable sequence. The DIRECT / CROSS / OTHER three indicator lights display the type of network cable directly.

Press the "MUTE" button of cable tracer for 2 seconds. After the "Di" sound, the silent mode is turned on. In the silent mode, can judge cable type according to the indicator light. Press the "MUTE" button again to exit the silent mode.

Application

It's convenient for people to find out the other end of the cable from the messy cables in security maintenance and network engineering.

While searching BNC cable, one port of the alligator clips connect to the copper core or copper net of the BNC cable, the other one to connect the earth wire (barred windows).



Note: The battery of the cable tracer must according to corresponding positive pole + and negative pole -, otherwise will damage the tester.



Note: While the cable tracer tester is receiving the audio signal from the tester, it may be influenced by other signals and make some noise.

6.5 PoE / DC12V 3A power output

When the tester is turned on, the DC12V power output functions are automatically turned on.

To use the PoE Power Output function, change the switch “ON” or “OFF”.

The IP camera needs to connect the LAN port before you turn on PoE Power. If the IP camera supports PoE, the PoE power is delivered via pins 1, 2, 3, and 6 on the LAN port. The IP tester will display “48V ON” at the top of the screen when the POE power is still on.




Note:

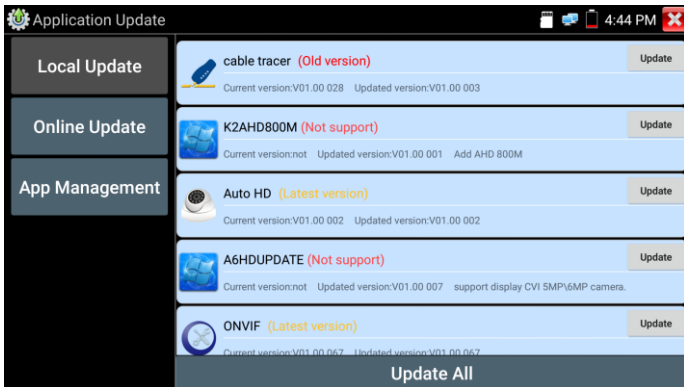
1. Don't input power into the “DC12/3A OUTPUT” port.
2. Don't output this DC12V/3A power to the DC12V/IN port of the IP camera tester to avoid destroy.

3. The IPC tester power output is close to 3A, if the IP camera's power is over 3A, the tester will auto enter protection mode. Disconnect all the connections of the tester and then connect the tester with power adaptor to resume the tester.
4. Before turning on the PoE power output, please make sure the IP camera supports PoE power. Otherwise it may damage the IP camera.
5. Before turn on PoE power output, please connect the IP camera to the LAN port of tester.
6. Make sure the tester is full charged or more than 80% charged, otherwise the tester will shows "low power", "not able to supply power".

6.6 Update

Copy the downloaded update file to SD card "update" directory, if no this directory, please create one.

Click the  icon to open the Update menu. Select "Local Update" to update via the SD card or select "Online Update" to check for updates on the internet. If there are applications that need updating, the applications will be listed in the interface, click related applications, update to the latest version.



Online update: Connect the Internet to update the apps.

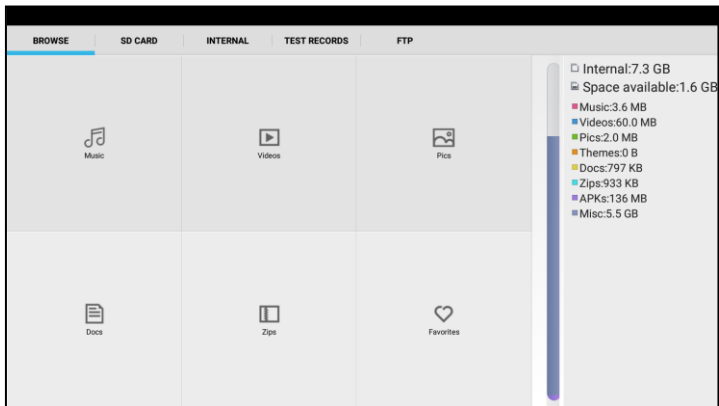
App management: This can uninstall and open APP.

6.7 File explorer

Click “File” on the top bar tool, can select internal or external storage. Click on the upper right corner Icon “...”. will pop-up menu, you can select other operation or exit.

Browse

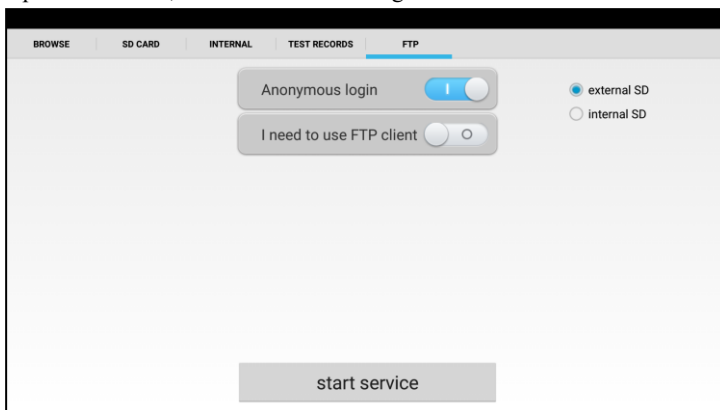
It includes Music, Videos, Pictures, Documents, zip file etc. It is convenient to view and manager.



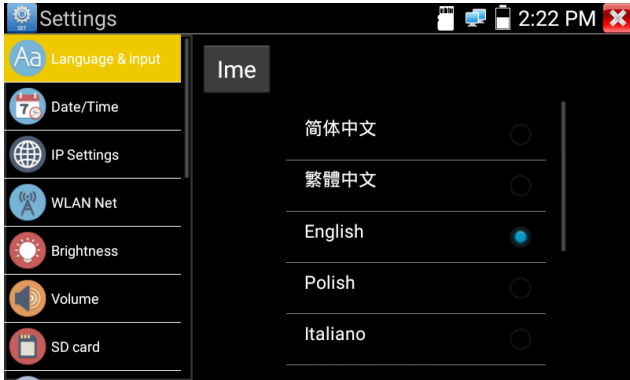
FTP server

You can choose internal or external SD card.

Other operation details, Pls refer to FTP settings.



6.8 System Setting



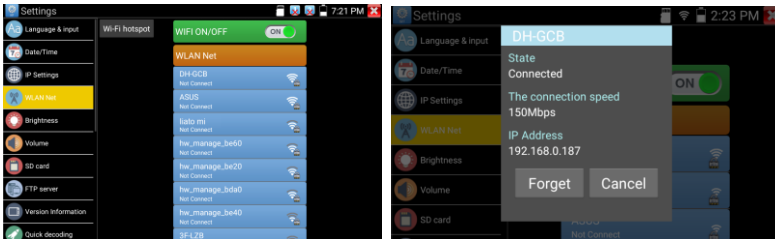
Language: Select your desired language: English, Chinese, Korean, Russian, Italian, Polish, Spanish, French or Japanese.

Typewriting: You can select typewriting or install other typewriting:

Date/Time: Set the Date/time of the IP tester.

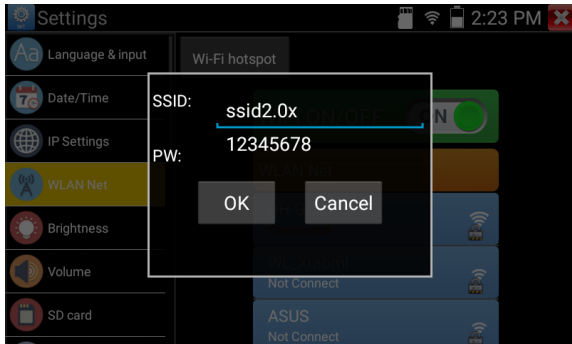
IP setting: Manually set the IP address, Subnet Mask, Default Gateway and DNS address or select “Dynamic allocation” to use DHCP. To test multiple network segments, click “Advanced” and then click “Add” to enter another IP address for the IP tester.

WLAN Net: Turn WiFi off or on by pressing the “Open the wifi” button. Once WiFi is turned on, and click connected WIFI, it will scan for wireless networks in your area.



Select and press “WIFI” several seconds, to set static IP address.

Wi-Fi hotspot: Input “SSID” name and “password”, and then click “ok” to create Wi-Fi hotspot.

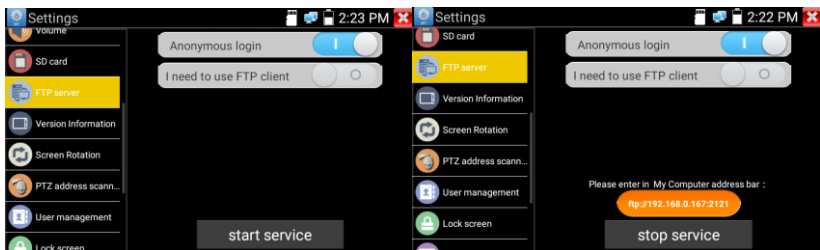


Brightness: Set the desired brightness of the IP tester and adjust the sleep time settings.

Volume: Set volume level

SD Card: Displays SD Card Capacity. You can also format the SD card or unmount it before removing it.

FTP server: Once the IP tester connects to a network, a computer can be used to read the SD card files via FTP.



Start the FTP server and then input the tester’s FTP address in the PC’s address bar. This will enable the PC to read, copy and edit the files from the SD card without the use of SD card reader.

Version information: Shows applications version information, if press any apps icon several seconds to uninstall.

Screen display rotation: Click on “Screen Rotation” to flip the IP tester’s display 180 degrees. This function is very convenient for the user to connect the LAN cable on the bottom of the unit without having to flip the unit itself.

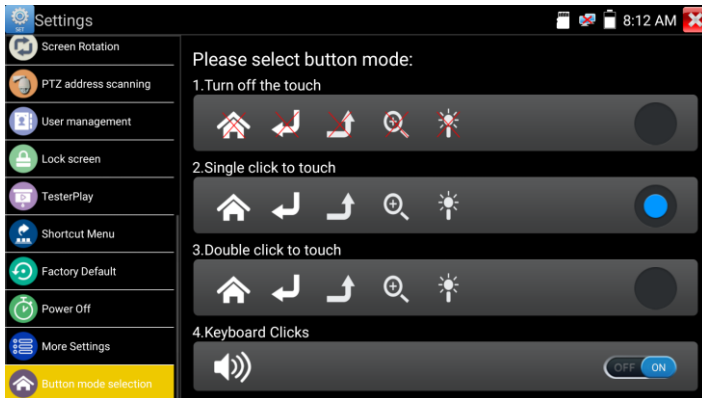
PTZ address scan: You can toggle the PTZ Address scan off or on before entering the “PTZ controller” app. This needs to be turned on in order to use the PTZ Scan feature of the PTZ app.

Lock Screen: The meter default is not locked. You can choose password Lock screen, pattern Lock screen or “NO”.

Restore the factory settings: If the tester to restore factory settings, all your personal files and apps will be removed.

Power Off: Manually to set the power off after hibernation time(0-23h 59min).

Button mode selection: It can select button mode .



7. Specifications

7.1 General Specifications

Model	IP Camera Tester
Display	New 4 inch IPS touch screen cctv tester, 960*640 resolution
Network port	10/100/1000M auto adjust, RJ45
WIFI	Built in WIFI, speeds150M, display wireless camera image
H.265 Main stream test	New hardware decoding, 8K H.265/4K H.264 camera image display by mainstream testing
IP discovery	Auto-scan the whole network segment camera IP
Rapid ONVIF	Search camera quickly, auto log in and display image from the camera, activate Hikvision camera
Hik test tool	Batch activate Hikvision camera, display image from the camera, modify channel, batch modify IP, user name and password parameters etc.
DH test tool	Batch activate Dahua camera, batch modify IP, modify channel, user name and password parameters etc.
IP camera type	ONVIF, ONVIF PTZ, Dahua IPC-HFW2100P, Hikvision DS-2CD864-E13, Samsung SNZ-5200, Tiandy TD-NC9200S2, Kodak IPC120L, Honeywell HICC-2300T, RTSP Viewer
Auto HD	Automatically recognize type and resolution of TVI/CVI/AHD camera and display image. Support coaxial PTZ and call OSD menu
CVI video signal test*(Optional)	1 channel CVI input (BNC interface, resolution support 8MP CVI camera test, 3840 x 2160P 12.5/15 FPS, 2880x1920P 20FPS, 2592x1944P 20FPS, 2560x1440p 25/30fps, 1920x1080p 25/30fps, 1280x720p 25/30/50/60fps, UTC control and call OSD menu

TVI video signal test*(Optional)	1 channel TVI input (BNC interface), resolution support 8MP TVI camera test, 3840 x 2160P 12.5/15 FPS, 2592x1944p12.5/20fps, 2688x1520p 15fps, 2560x1440P 18/25/30fps, 2048x1536p 18/25/30fps, 1920x1080p 25/30fps, 1280x720p 25/30/50/60fps, UTC control and call OSD men
AHD video signal test*(Optional)	1 channel AHD input (BNC interface), resolution support 8MP AHD camera test, 3840 x 2160P 15 FPS, 2592x1944p12.5/20fps, 2560x1440p 18/25/30fps, 2048x1536p 18/25/30fps, 1920x1080p 25/30fps, 1280x720p 25/30/50/60fps, UTC control and call OSD menu
Analog video test	1 channel BNC Input, NTSC/PAL (Auto adapt)
Snapshot, Video record and playback	Capture current images and record live video as JPG file. Media player will view photos and playback video
TesterPlay	screen projection: tester, mobile phone and PC display at the same time
12V/3A power output	Output DC12V/3A power to camera
PoE power output	48V PoE power output, Max power 25.5W
Audio test	1 channel audio signal input
PTZ control	Support RS485 control, Baud 600-115200bps, Compatible with more than 30 protocols such as PELCO-D/P, Samsung, Panasonic, Lilin, Yaan, etc
Data monitor	Captures and analyzes the command data from controlling device, also can send hexadecimal
UTP Cable tester	Test UTP cable connection status and display on the screen.

	Read the number on the screen
Cable tracer* (Optional)	Find a connected cable from a bundle of cables using tone generator
Power	
External power supply	DC 12V 1A
Battery	Different item, battery is different, Built-in 7.4V Lithium ion battery, 2600mAh
Rechargeable	After charging 3-4 hours, normal working time 9 hours (different item battery is different, the working time is different)
Parameter	
Operation setting	OSD menu, select your desired language: English, Chinese, Korean, Russian, Italian, French, Polish, Spanish, Japanese etc
Auto off	1-30 (mins)
General	
Working Temperature	-10°C---+50°C
Working Humidity	30%-90%
Dimension/Weight	160mm x 100mm x 45mm / 0.36kg